

NIGHT LIGHT

Lyrics by Laufey
Music by Laufey and Leroy Clampitt
Arrangement by Solveig Deason

♩. = 65

Piano introduction in E-flat major, 12/8 time. The right hand plays a melody of eighth notes, and the left hand plays a bass line with chords. Chords are EbM, Abm(M7), EbM, and Abm(M7).

3 Verse

Up the stair-case first door to your left Walls of white, a win - dow

3 EbM Fm Bb7sus4 Bb7 EbM

6

ten by ten A trea - sure chest of e - very -

6 Fm Bb7sus4(b9) EbM Eb7

NIGHT LIGHT

8

thing I've e-ver known Safe in - side my child - hood home

8 AbM Abm6 Gm G dim Fm Bb7

11

E - very re - cord I have e-ver heard I know e - very me - lo - dy and

11 EbM Fm Bb7sus4 Bb7 EbM

14

e - very word A lit - tle book of e - very

14 Fm Bb7sus4(b9) EbM Eb7

NIGHT LIGHT

16

dream I e-ver had — Slee - ping in that twin sized bed

16 A♭M A♭m6 Gm G dim Fm B♭7

Detailed description: This block contains the first system of music, measures 16 through 18. It features a vocal line on a treble clef staff and a piano accompaniment on a grand staff (treble and bass clefs). The key signature has two flats (B♭ and E♭). The vocal line starts with a quarter note 'd', an eighth note 'r', a quarter note 'e', an eighth note 'v', a quarter note 'e', a quarter note 'r', a quarter note 'h', a quarter note 'a', a quarter note 'd', followed by a quarter rest. The piano accompaniment consists of chords in the right hand and a moving bass line in the left hand.

19

♩ Chorus

All — of the laugh - ter

19 Gm7 CM

Detailed description: This block contains the second system of music, measures 19 through 21. It is marked as the start of the chorus with a double bar line and a repeat sign. The vocal line begins with a whole rest, followed by a quarter rest, then a quarter note 'a', a quarter note 'l', a quarter note 'l', a quarter note 'o', a quarter note 'f', a quarter note 't', a quarter note 'h', a quarter note 'e', a quarter note 'l', a quarter note 'a', a quarter note 'u', a quarter note 'g', a quarter note 'h', a quarter note 't', a quarter note 'e', a quarter note 'r'. The piano accompaniment features a change in time signature from 6/8 to 12/8 between measures 19 and 20. The key signature changes from two flats to one flat (B♭) in measure 20.

22

All — the sleep - less nights Wai-ting for — e-ver

22 Fm7 B♭M Gm7

Detailed description: This block contains the third system of music, measures 22 through 24. The vocal line starts with a quarter note 'a', a quarter note 'l', a quarter note 'l', a quarter note 't', a quarter note 'h', a quarter note 'e', a quarter note 's', a quarter note 'l', a quarter note 'e', a quarter note 'e', a quarter note 'p', a quarter note 'l', a quarter note 'e', a quarter note 's', a quarter note 's', a quarter note 'n', a quarter note 'i', a quarter note 'g', a quarter note 'h', a quarter note 't', a quarter rest, a quarter note 'w', a quarter note 'a', a quarter note 'i', a quarter note 'n', a quarter note 'g', a quarter note 'f', a quarter note 'o', a quarter note 'r', a quarter note 'e', a quarter note 'v', a quarter note 'e', a quarter note 'r'. The piano accompaniment continues with chords in the right hand and a moving bass line in the left hand.

NIGHT LIGHT

To Coda Θ

25

af - ter Snow fal-ling out-side Keep-ing on the night light

CM Fm7 Bb7 Bb7(b9)

28 Verse

Card - board box - es co - ver - ing the floor

Ebm Fm Bb7sus4 Bb7

30

Guess I won't be li - ving in here a - ny - more

Ebm Fm Bb7sus4(b9)

NIGHT LIGHT

32

Take down the po - sters ___ of the pop - stars on the wall ___

32 EbM Eb7 AbM Abm6

D.S. al Coda

34

Emp - ty room it looks so small

34 Gm G dim Fm Bb7

⊕ Coda

36

36 EbM Fm Bb7sus4 Bb7 EbM

NIGHT LIGHT

39



Take down the po - sters__ of the

39

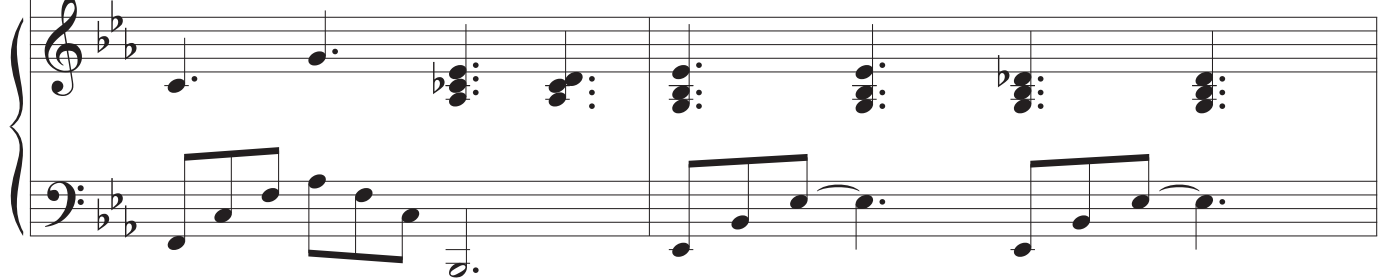
F m

Bb7sus4(b9)

Bb7(b9)

Ebm

Eb7



41



pop - stars on the wall__

Emp - ty room it feels so small

41

AbM

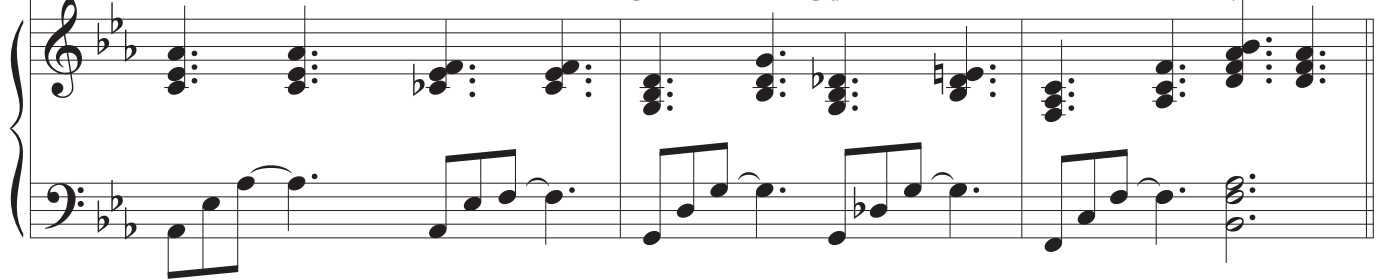
Abm6

G m

G dim

F m

Bb7



Chorus

44

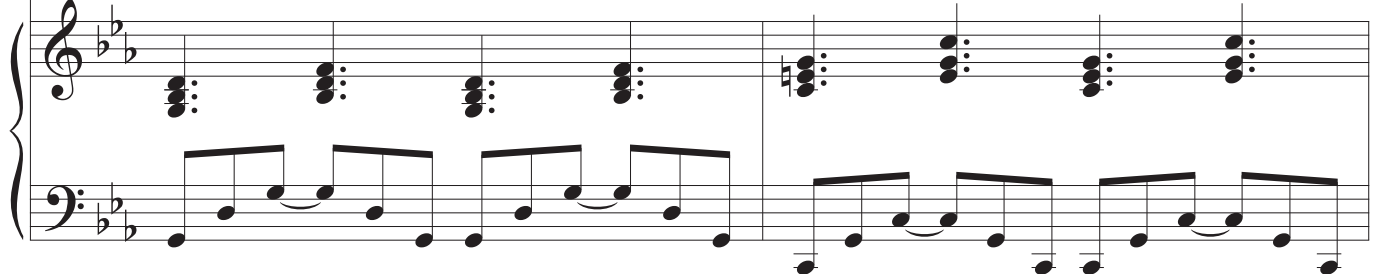


All__ of the laugh - ter

44

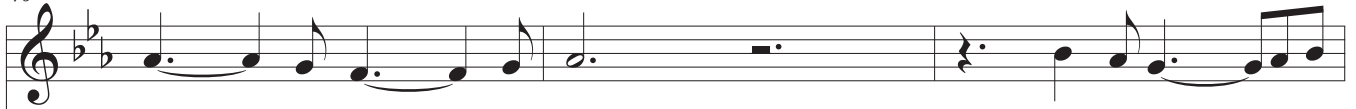
G m7

CM



NIGHT LIGHT

46



All the sleep - less nights

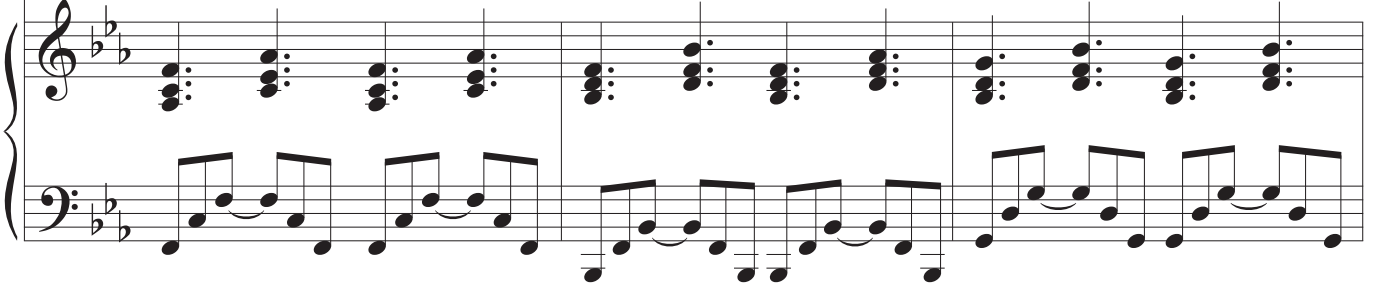
Wait - ing for e - ver

46

F m7

B \flat M

G m7



49



af - ter

Snow fal - ling out - side

Keep - ing on the night light

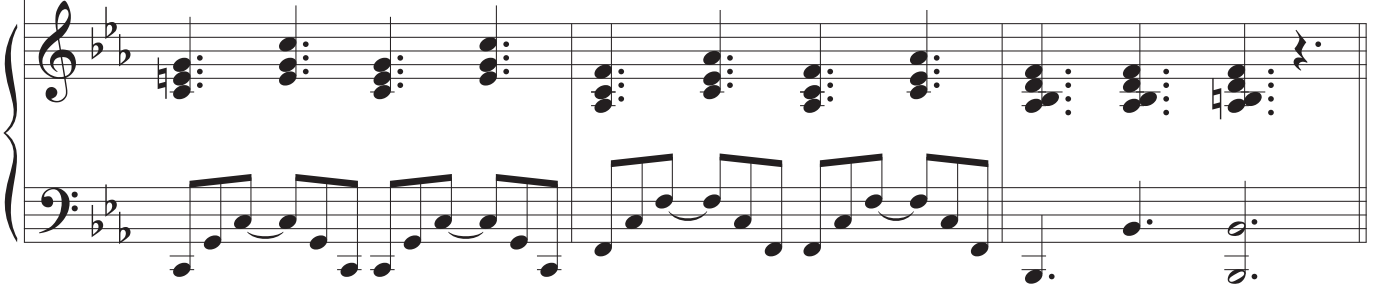
49

CM

F m7

B \flat 7

B \flat 7(b9)



52



52

E \flat M

A \flat m(M7)

E \flat M

A \flat m(M7)

E \flat M

